



■ Description

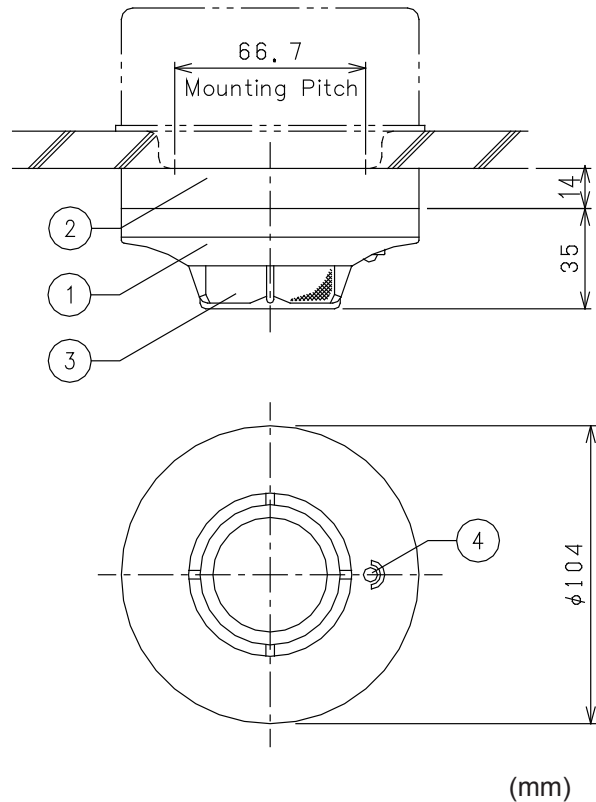
The 2KH2-LS conventional photoelectric smoke detector achieves low monitoring current by the light scattering method, which an LED inside of the smoke chamber emits light every 4 seconds for smoke detection. A quick charge time, 20 seconds, is also achieved. The detector incorporates an alarm verification function which requires two successive pulses before an alarm is given. The interval between the first and second pulse is automatically reduced, to one second or less, after the first alarm condition is perceived. The detector's design provides strong immunity to air velocities and contamination.

The 2KH2-LS has a chemically etched screen and its sensitivity is also easily confirmed in the field, using the NID-ET3-1 electronic tester.

■ Features

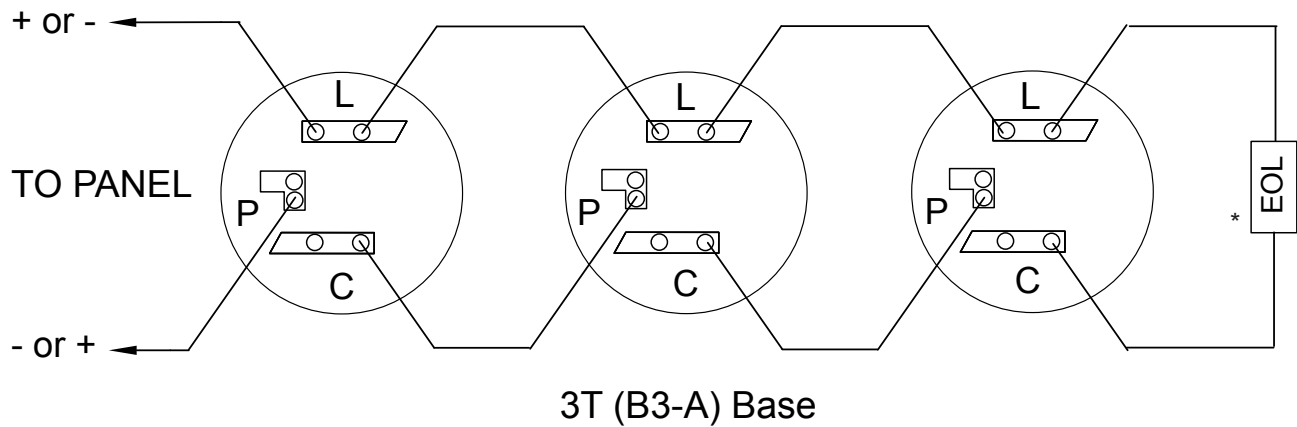
- Optical type smoke detector
- Stylish low profile design
- Effective screen for insects and dust particles
- Effective smoke inflow characteristics
- Wind and atmosphere variations have no influence
- No polarity allows simple wiring connection
- Wide working voltage of 14.5 VDC to 30 VDC suits most conventional panels
- Current consumption less than 24 μ A (standby), 65 mA (alarm)
- Compatible with optional model 3T (B3-A) base

■ Dimensions



1. Main Body
2. Optional Mounting Base
3. Smoke Inlet
4. Operation Indicator

■ Typical Wiring Diagram



* EOL: End of Line devices usually come with the fire alarm control panels or other devices to which the detectors connect.

■ Specifications

Specifications	2KH2-LS
Rated Voltage	24 VDC, filtered or unfiltered
Operating Voltage	14.5 VDC to 30 VDC
Operating Current	Standby : 24 μ A and less Alarm : 65 mA
LED Indicator	Red LED illuminates in an alarm condition, capable of holding alarm indication
Smoke Sensitivity	10% / m (nominal)
Operating Temperature	-10°C to +50°C
Relative Humidity	98% @ +60°C
Dimensions	ϕ 104 mm x H 35 mm (Detector head only) ϕ 104 mm x H 49 mm (with 3T base)
Weight	Head : approx. 120 g Base : approx. 50 g
Body Material	Flame Retardant Resin
Compatible Base	3T (B3-A)

Distributed By

All specifications are subject to change without any notice.
For more information, contact with NITTAN.

NITTAN

54-5, 1-chome, Sasazuka,
Shibuya-ku, Tokyo151-8535, Japan
TEL:81-3-5333-7021 FAX:81-3-5333-8615